

Your Ref:	Quantity:	Product Code: PS0002
Our Ref:	Version: 1	Product Colour: LAVENDER

PRINTING CONCERNS:

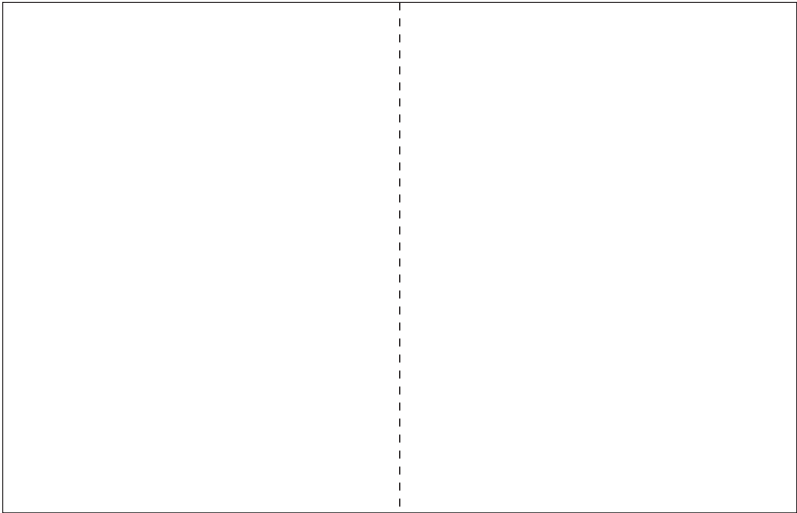
PRODUCT INFO:

We stock this item in the following colours

PANTONE REFERENCE(S)

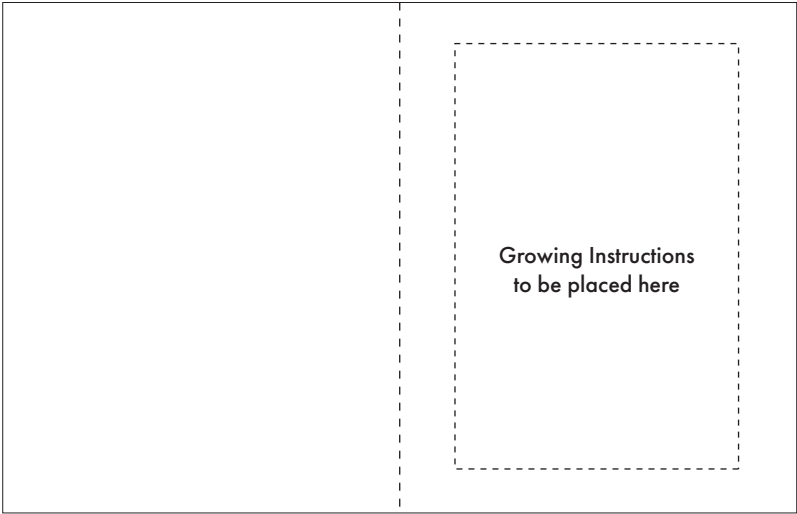
Full colour

ARTWORK SCALE 75%



REAR (when folded)

FRONT (when folded)



INNER LEFT (when folded)

FOLD

INNER RIGHT (when folded)

Product Image for visualisation
- colours may vary



The dashed line is to demonstrate print area and will not appear on your printed item

PLEASE NOTE:

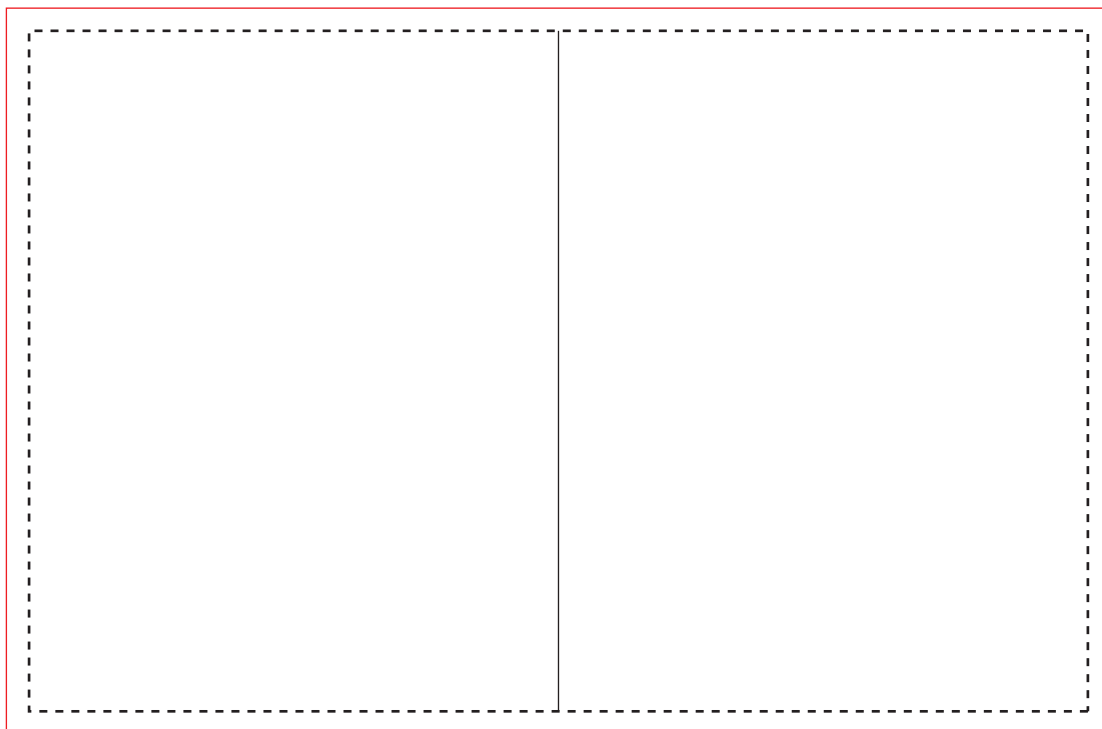
- All colours including print and product are for visual purposes only and should not be regarded as the actual colour of the product and print.
- Some products may vary from batch to batch and may differ from previous orders.
- The colour and texture of a product can also have an effect on the final print colour.
- By approving this order we accept that you understand these terms.

1. Your order will not go in to print and production time cannot be confirmed, unless artwork has been approved via the online system.
2. Once printed, artwork cannot be amended, mistakes must be rectified at visual stage.
3. Claims for faulty goods will be honoured, only if the goods are returned to us. We will not issue credits/refunds for items that have been distributed. Please ensure that goods are satisfactory before distribution
4. We are not responsible for delays during transit.

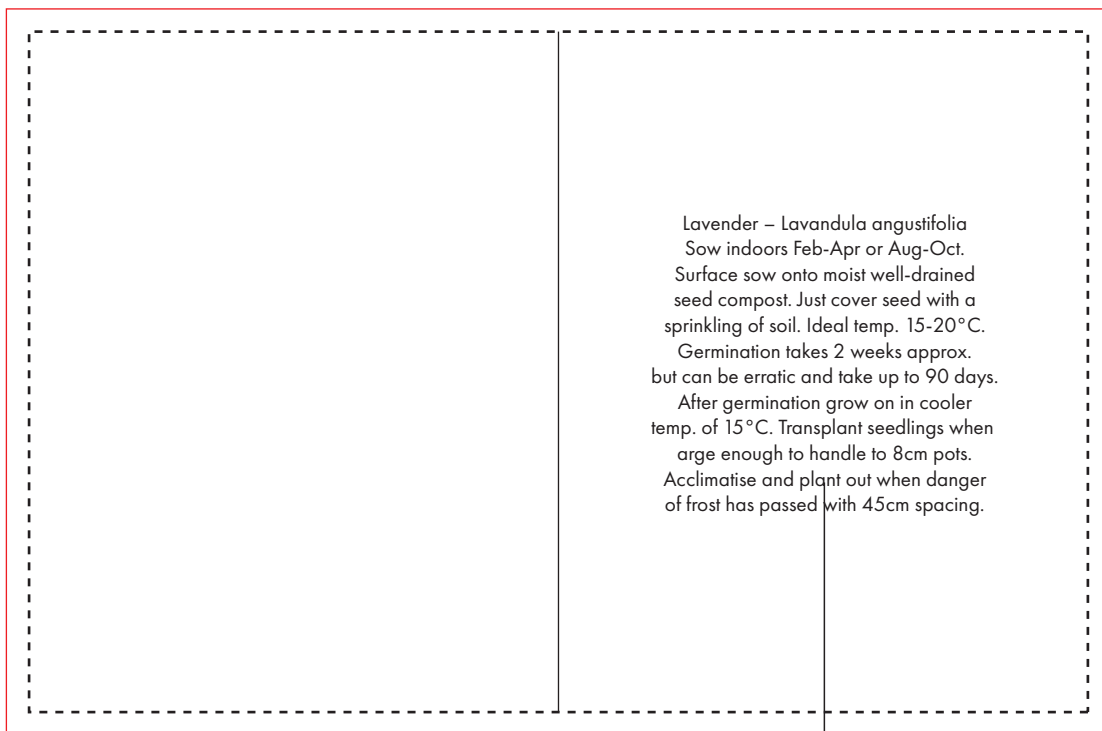
By approving this visual, you are confirming you have thoroughly checked all information, including layout, fonts, spelling, print colours, print size, print position, product, product colour and quantity.

To proceed, please approve visual via the online system.

ARTWORK SCALE 100%
Print Area: 140mm x 90mm



FLOOD RED AREA WITH
BACKGROUND
COLOUR FOR BLEED



FLOOD RED AREA WITH
BACKGROUND
COLOUR FOR BLEED

SUGGESTED
GROWING
INSTRUCTIONS

Lavender – *Lavandula angustifolia*
Sow indoors Feb-Apr or Aug-Oct.
Surface sow onto moist well-drained
seed compost. Just cover seed with a
sprinkling of soil. Ideal temp. 15-20°C.
Germination takes 2 weeks approx.
but can be erratic and take up to 90 days.
After germination grow on in cooler
temp. of 15°C. Transplant seedlings when
large enough to handle to 8cm pots.
Acclimatise and plant out when danger
of frost has passed with 45cm spacing.